



**BrianzaLUG**

Brianza LEGO® Users Group

# Ferrari 126C2

Personal LEGO® Technic creation  
by Luca Rusconi  
RoscoPC



## F1 Constructors World Champion in 1982 Gilles Villeneuve #27

Front suspension: upper rocker arm operating inboard coil spring/damper, lower wishbone.

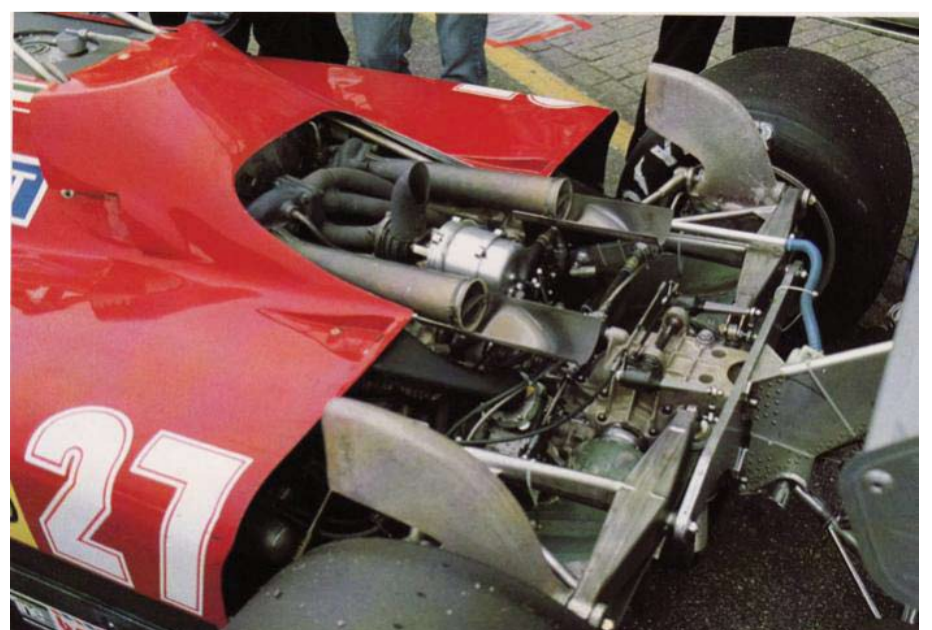
Rear suspension: upper rocker arm operating inboard coil spring/damper, lower wishbone, anti/roll bar.

Aluminium monocoque chassis.

Ferrari V6 engine type 021 1496cc

2 KKK turbos 580 HP @ 11'000 rpm

DIMENSIONS	model mm	real car mm
total length	538	4333
width	264	2110
front track	223	1787
rear track	215	1644
height	126	1025
wheelbase	332	2657
front tyre diam	80	597
front tyre width	34	254
rear tyre diam	83	660
rear tyre width	49	394



[luca.rusconi@roscopc.it](mailto:luca.rusconi@roscopc.it)